

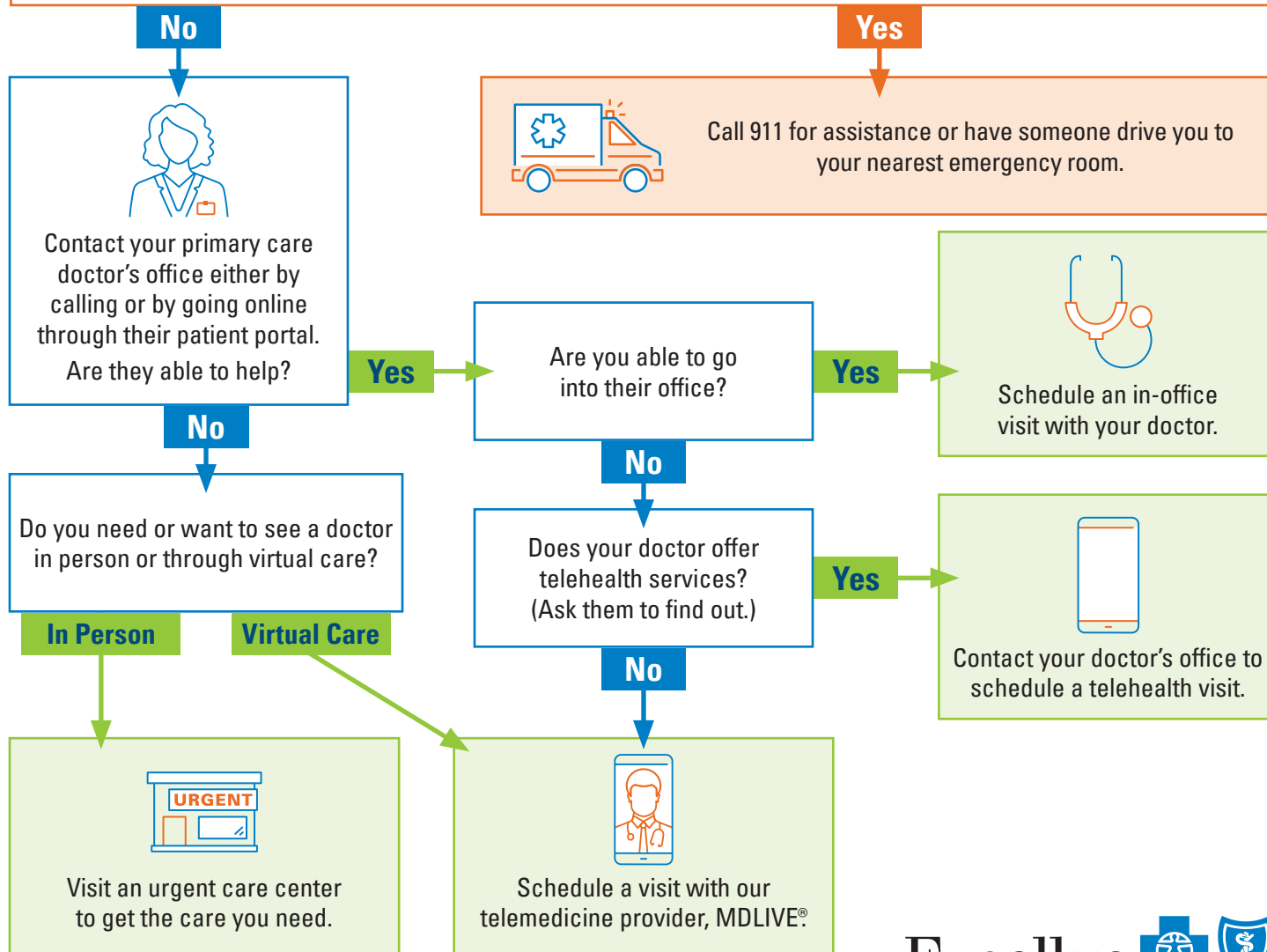
Which care is best for me?

When you need medical care, you have many options, but what is the best fit for your needs? Below are some questions to think through the next time you are trying to decide whether to go to your Primary Care Doctor, Virtual Care, Urgent Care, or the Emergency Room.

Are you experiencing any of the following potentially life-threatening conditions?

Some examples include:

- Heart attack signs, such as severe chest pain
- Stroke signs, such as numbness, sudden loss of vision and difficulty talking
- Severe shortness of breath
- Coughing up or vomiting blood
- Cuts or wounds that won't stop bleeding
- Possible broken bones
- Poisoning
- Trauma to the head
- Sudden, severe abdominal pain
- Suicidal thoughts



Excellus  

Need to find a primary care doctor or get started with telemedicine?
Visit our website at [ExcellusBCBS.com/Find-A-Doctor](https://www.ExcellusBCBS.com/Find-A-Doctor)

Everybody Benefits

Copyright © 2025, All rights reserved.

MDLIVE does not replace the primary care physician. MDLIVE is not an insurance product. MDLIVE operates subject to state regulation and may not be available in certain states. MDLIVE does not guarantee that a prescription will be written. MDLIVE does not prescribe DEA controlled substances, non-therapeutic drugs and certain other drugs which may be harmful because of their potential for abuse. MDLIVE physicians reserve the right to deny care for potential misuse of services. MDLIVE phone consultations are available 24/7/365, while video consultations are available during the hours of 7 am to 9 pm ET 7 days a week or by scheduled availability. MDLIVE and the MDLIVE logo are registered trademarks of MDLIVE, Inc. and may not be used without written permission. For complete terms of use and privacy policy, please visit www.mdlive.com/terms-of-use and www.mdlive.com/privacy-policy. MDLIVE is an independent company, offering telehealth services in the Excellus BlueCross BlueShield service area.

Excellus BlueCross BlueShield is a nonprofit independent licensee of the Blue Cross Blue Shield Association.